

**LOWER EXTREMITY VENOUS INSUFFICIENCY CRITERIA**

The amount of lower extremity venous reflux is determined by its duration.

**Superficial veins:**

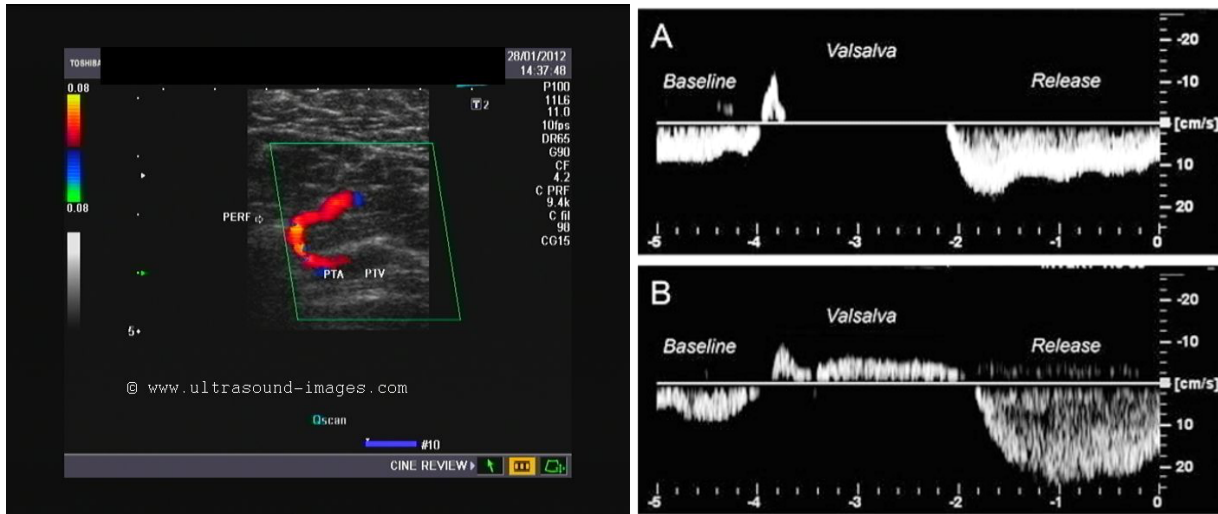
Retrograde flow of .5 seconds to 2 seconds is considered mild.

Retrograde flow of 2 seconds to 5 seconds is considered moderate.

Retrograde flow of 5 seconds or greater is considered severe.

**Perforators veins:** Retrograde flow greater than .5 seconds is considered incompetent. All perforating veins larger than 4 mm are considered incompetent. Veins smaller than 3 mm are considered competent.

**Femoropopliteal veins:** Retrograde flow greater than >1 second is incompetent.



**References:**

Techniques in Non- Invasive Vascular Diagnosis 2<sup>nd</sup> edition. Robert Daighe, BA, RVT, Summer Publishing 2002.

Introduction to Vascular Ultrasonography, 5<sup>th</sup> Edition; Zweibel, Pellerito, Philadelphia

Definition of venous reflux in the lower extremity veins by Nicos Labropoulos PhD, DIC, RVT, etc, Jounrla for Vascular Surgery 2003: