



Using iNtuition – Free ROI Tool –

Multi-masking for Multiple Volumes

Quick Guide for Customers

| Notices

Precautions and Warnings Related to Software Use

This quick step guide is not a replacement for the full manual. Please review the Aquarius iNtuition™ Client User Manual for all warning messages, notices and precautions prior to using the software.

About the Guides

Aquarius iNtuition™ Quick Step Guides are intended to be used as a step-by-step guide through typical workflows and should be used in conjunction with clinical application training. The guides are not a substitute for clinical applications training.

Regulatory Notice

Some images may display tools that are not cleared for clinical or diagnostic use the FDA-510k and may only be used for research purposes only. If you are interested in these application tools, please contact your account representative for more information.

Note: Customers who have an integration with a PACS system, please verify upgrade timelines with your PACS vendor.

| For additional support, or to Contact TeraRecon, Inc.

United States

1 (877) 996-0100

email: support@terarecon.com

24-hour Emergency toll-free number is (617) 424-9405

Europe

+49-(0)69-9510352-255 for all European customers

0800-837273266 for customers in Germany, Switzerland/Austria, and France

email: support@terarecon.com

24-hour Emergency toll-free number is 1 (617) 424-9405

International Support

1 (650) 653-4290 (U.S.)

email: support@terarecon.com

24-hour Emergency number is 1 (617) 424-9405

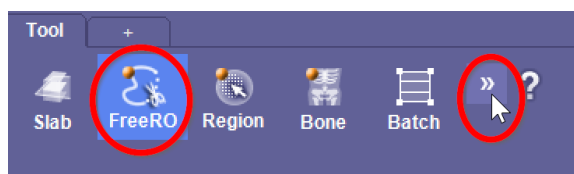


4000 East 3rd Ave, Suite 200 Foster City, CA 94404

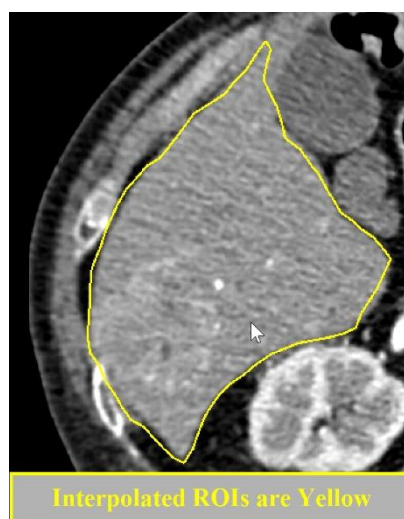
Quick Steps: Free ROI Tool

To use the 3D Batch Tool – Multi-masking for Multiple Volumes:

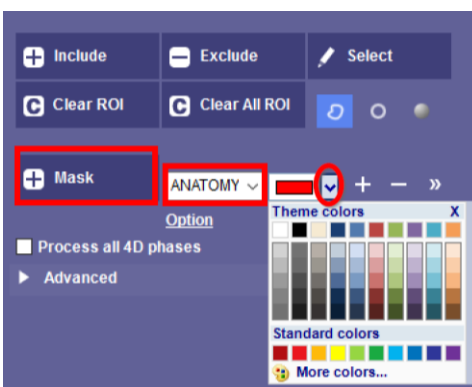
1. Load study.
2. Select the Free ROI tool from the tool panel on the right.
 - a. If the Free ROI tool is not visible, left click on the double arrows to view the entire available tool set.



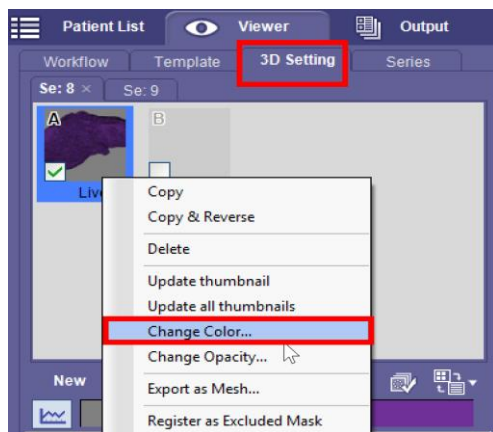
3. Hold Shift + Left Click and drag to draw ROIs along the contour of the desired anatomy. Repeat on multiple slices, the system will interpolate so it is not necessary to draw ROIs on every slice. Check the interpolated ROIs and edit if necessary.



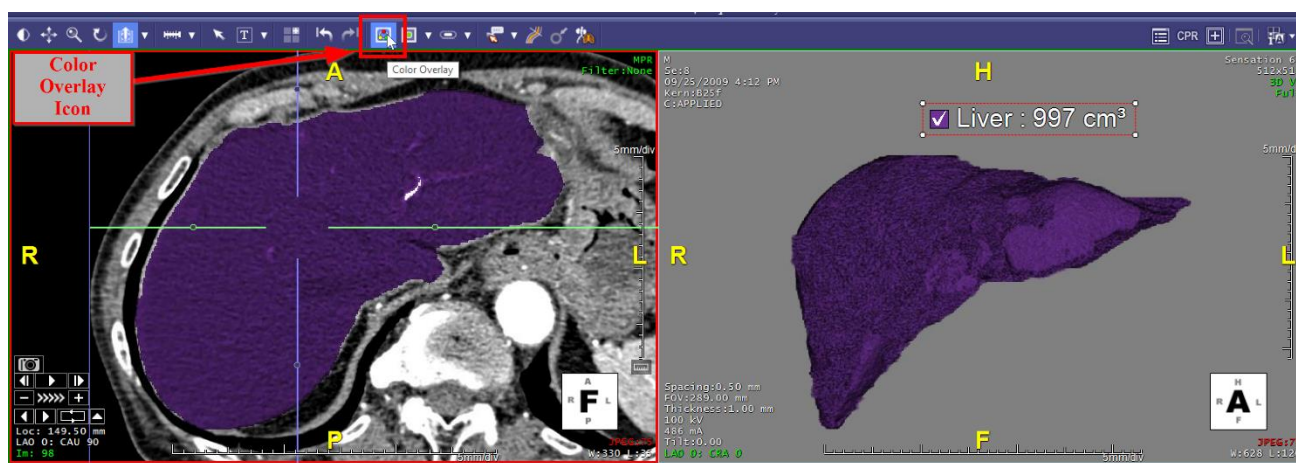
4. After checking the ROIs, Name the part in the available text option (next to the color selector drop down) or choose the part from the drop-down menu. Select the desired color from the options and then select “+ Mask” button to apply.



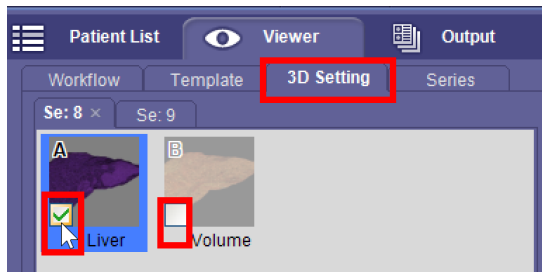
- a. Note if you do not see a volume displayed, click the “Option” link selection under the mask name and select the option to display the volume.
 - b. Repeat these steps as many times as desired for multiple segmentations.
5. The 3D Settings Tab can be used to change the color, Opacity and Graphs:
 - a. Right click on the desired thumbnail icon segment, select change color or change opacity.



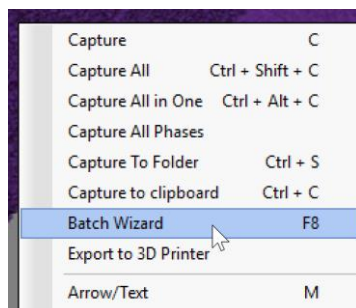
6. To display the color masks on the MPR images, click on the “Color Overlay” option from the top toolbar.



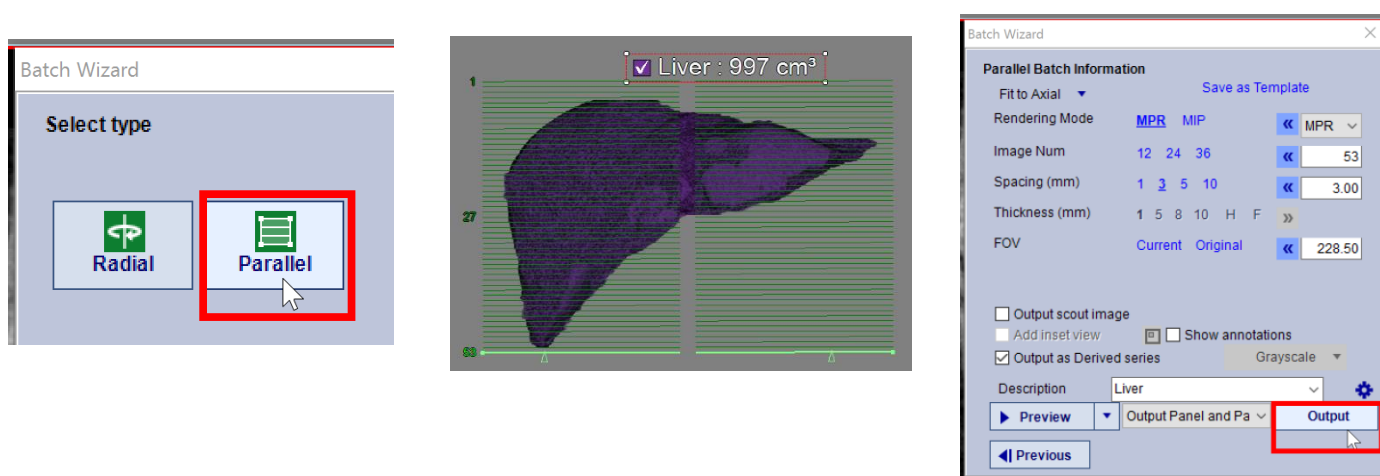
7. Once finished performing the segmentations and making adjustments to the colors, the various masks can be displayed together, separately, or in any combination.
 - a. Open the 3D settings tab. Select the masks to be displayed, deselect any that are not to be displayed by checking or unchecking the box in the corner of the corresponding mask icon thumbnails.



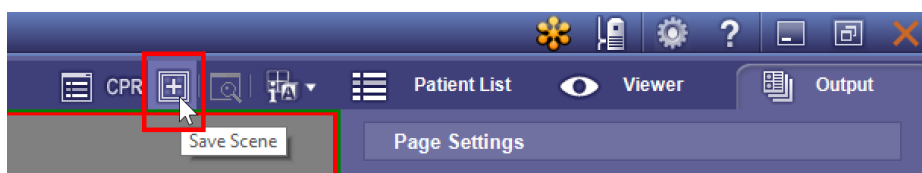
8. To save an axial set of images with the color overlay: Right Mouse click in the 3D box and select Batch wizard or use the Batch Tool in the tool panel.



- a. Select Parallel then left click and drag to drop gridlines. Set parameters as desired and click Output to save.



9. Capture any additional images as desired. Save or Send to PACS from the Output Tab.



10. Save a Scene before closing to save all of your work by left clicking on the **Save Scene** icon in the top toolbar.

