



# Using iNtuition – Dynamic Region Grow Tool

## Multi-masking for Multiple Volumes

**Quick Guide for Customers**

## | Notices

### **Precautions and Warnings Related to Software Use**

This quick step guide is not a replacement for the full manual. Please review the Aquarius iNtuition™ Client User Manual for all warning messages, notices and precautions prior to using the software.

### **About the Guides**

Aquarius iNtuition™ Quick Step Guides are intended to be used as a step-by-step guide through typical workflows and should be used in conjunction with clinical application training. The guides are not a substitute for clinical applications training.

### **Regulatory Notice**

Some images may display tools that are not cleared for clinical or diagnostic use the FDA-510k and may only be used for research purposes only. If you are interested in these application tools, please contact your account representative for more information.

**Note: Customers who have an integration with a PACS system, please verify upgrade timelines with your PACS vendor.**

## | For additional support, or to Contact TeraRecon, Inc.

### **United States**

1 (877) 996-0100

email: [support@terarecon.com](mailto:support@terarecon.com)

24-hour Emergency toll-free number is (617) 424-9405

### **Europe**

+49-(0)69-9510352-255 for all European customers

0800-837273266 for customers in Germany, Switzerland/Austria, and France

email: [support@terarecon.com](mailto:support@terarecon.com)

24-hour Emergency toll-free number is 1 (617) 424-9405

### **International Support**

1 (650) 653-4290 (U.S.)

email: [support@terarecon.com](mailto:support@terarecon.com)

24-hour Emergency number is 1 (617) 424-9405

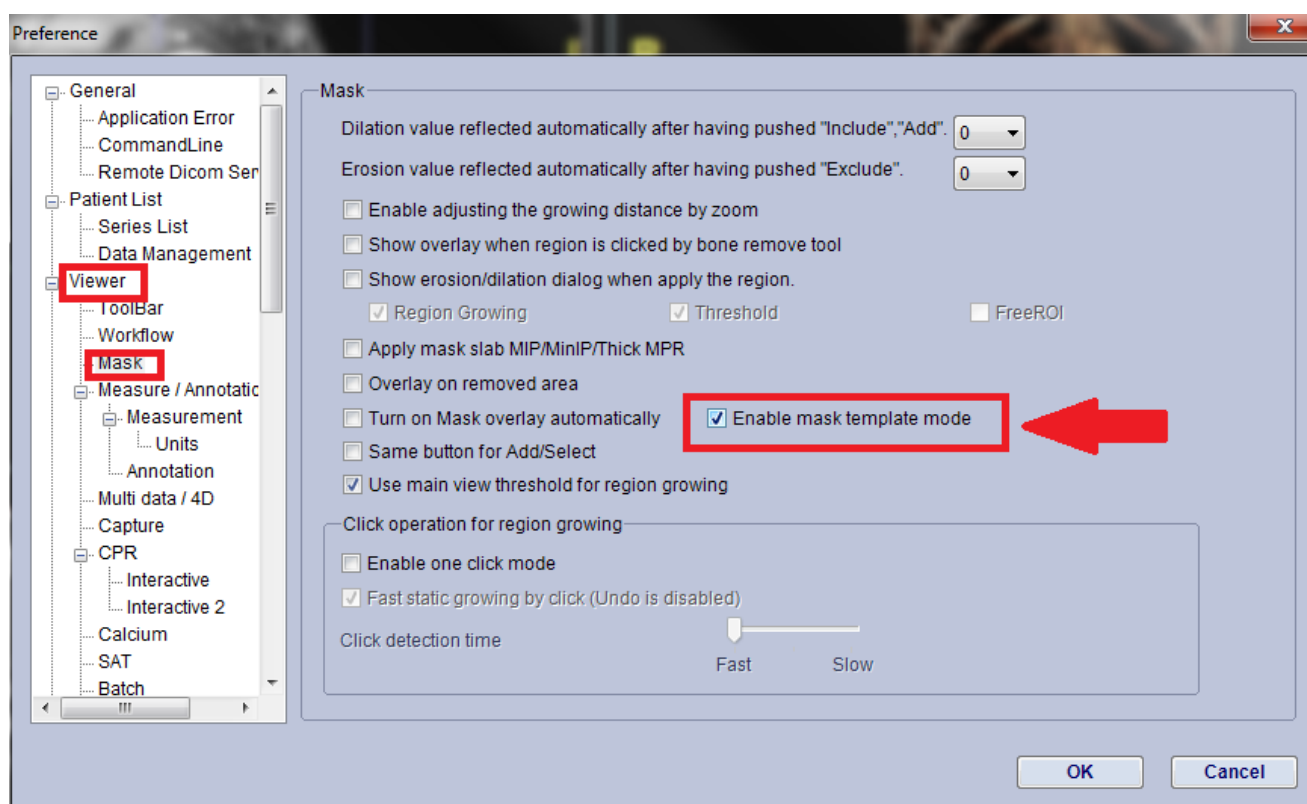
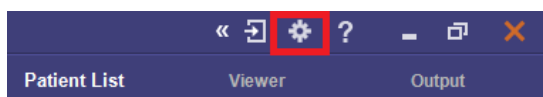


**4000 East 3<sup>rd</sup> Ave, Suite 200 Foster City, CA 94404**

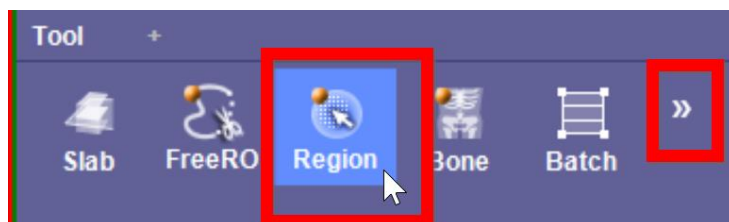
## Quick Steps: Dynamic Region Grow Tool

### Multi-masking for Multiple Volumes:

1. Load study
2. Open the preference settings and make sure that the preference settings are set as follows:
  - a. Viewer > Mask > Check "Enable mask template mode."

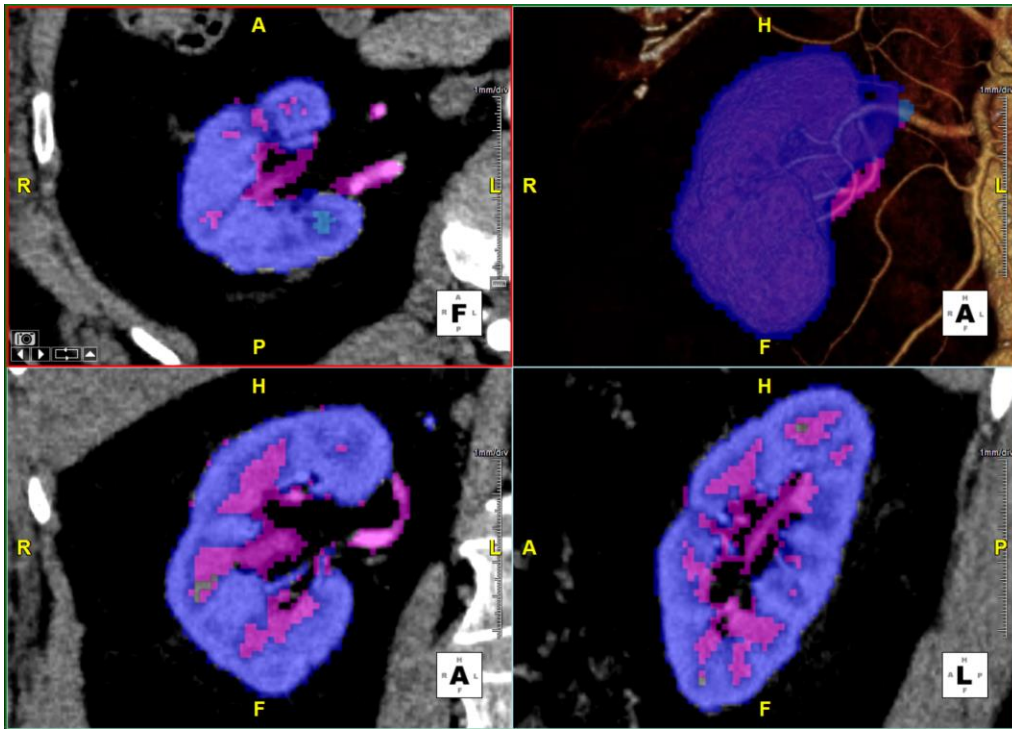


3. Select the Dynamic Region Grow tool from the tool panel on the right
  - a. If the DRG tool is not visible, left click on the double arrow to view the entire available tool set.

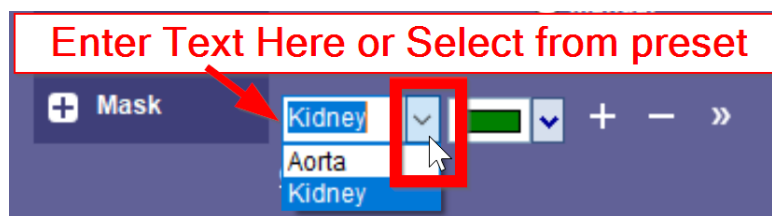


4. Segment the region of interest:

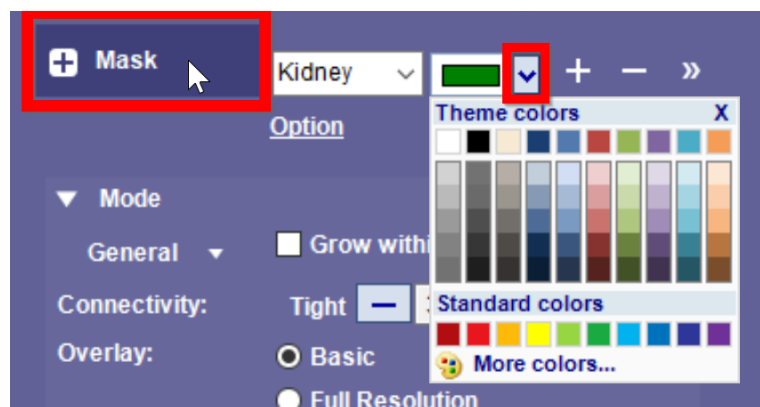
- a. To Grow: Shift + Left Click and hold.
- b. Do NOT hit the Add/Select or Select button.



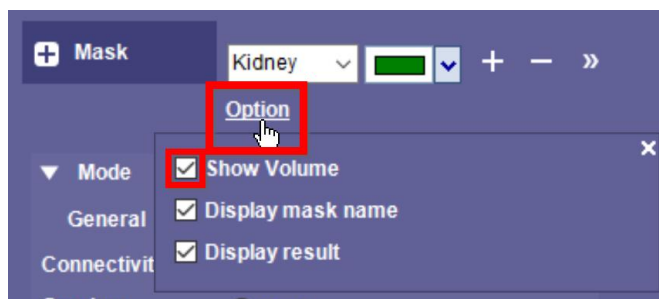
5. Name the segmentation in the available text option next to the color selector drop down or choose the part from the drop-down menu.



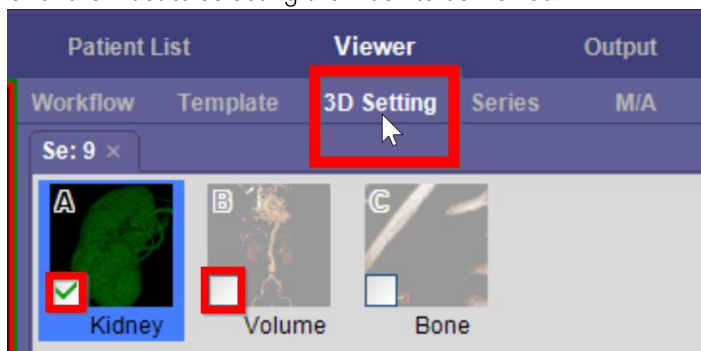
6. Select the desired color from the option and then select "+Mask" button to apply the segmentation.



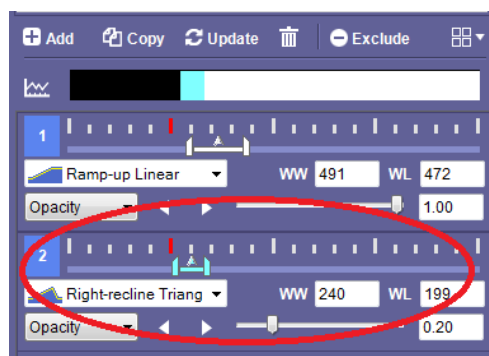
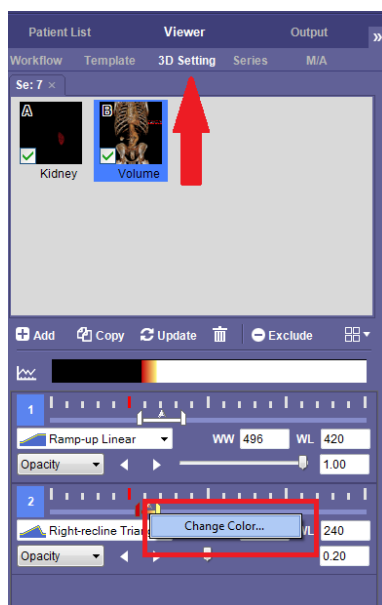
- a. Note: If you do not see a volume displayed, click on the “Option” link selection under the mask name and check the option to display the volume. Conversely, you can remove the volume through the same Option.



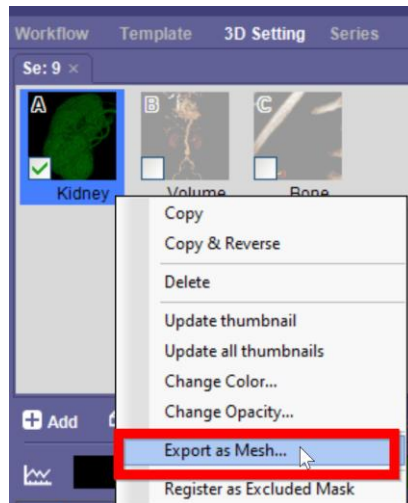
7. Repeat steps 4 through 6 for each desired segmentation.
8. The 3D Settings Tab:
- a. Can be used to select or deselect visible masks in the 3D Viewport and display multiple segmentations together, separately or in any combination by checking the box in the lower left corner of the mask to selecting the mask to be viewed.



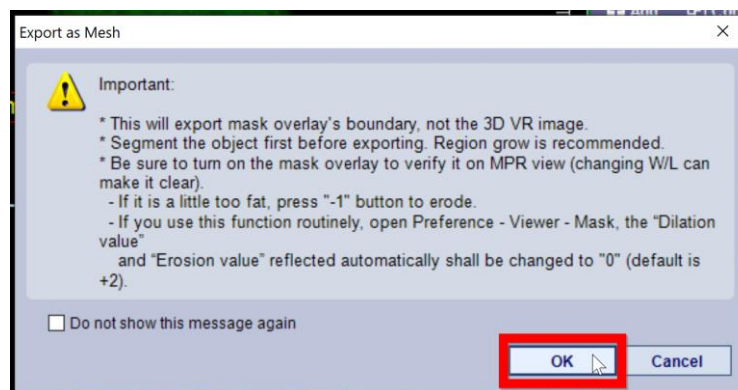
- b. Can be used to adjust the color, opacity and graphs.



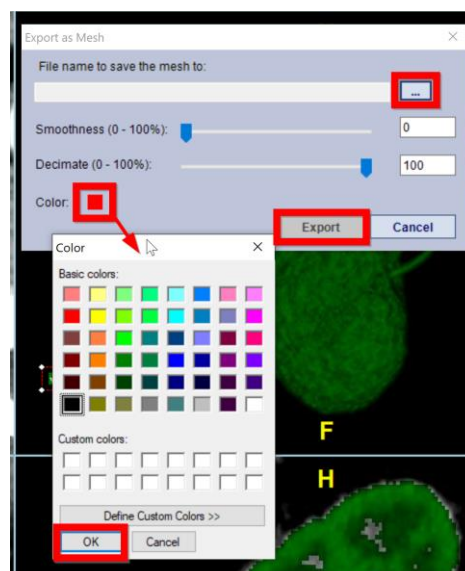
- c. Can also export desired masks as a mesh. Right click on the desired Mask and choose “Export as Mesh.”



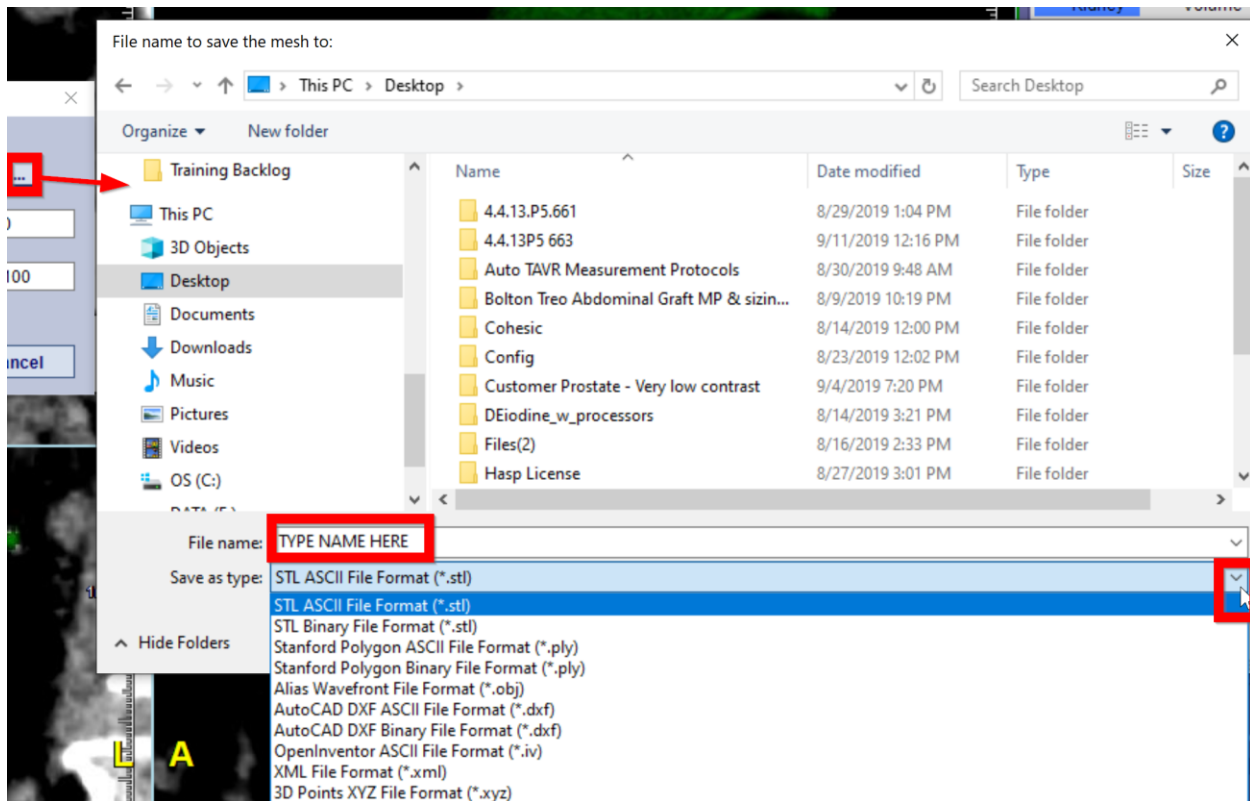
- d. A pop-up will appear; check OK to acknowledge the warning.



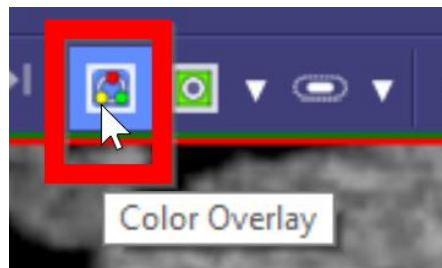
- e. Adjust the Smoothness, Decimation & Mesh color as desired.



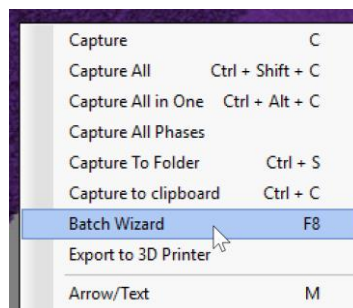
- f. Next Click on the 3 dot icon and save name, format and location.



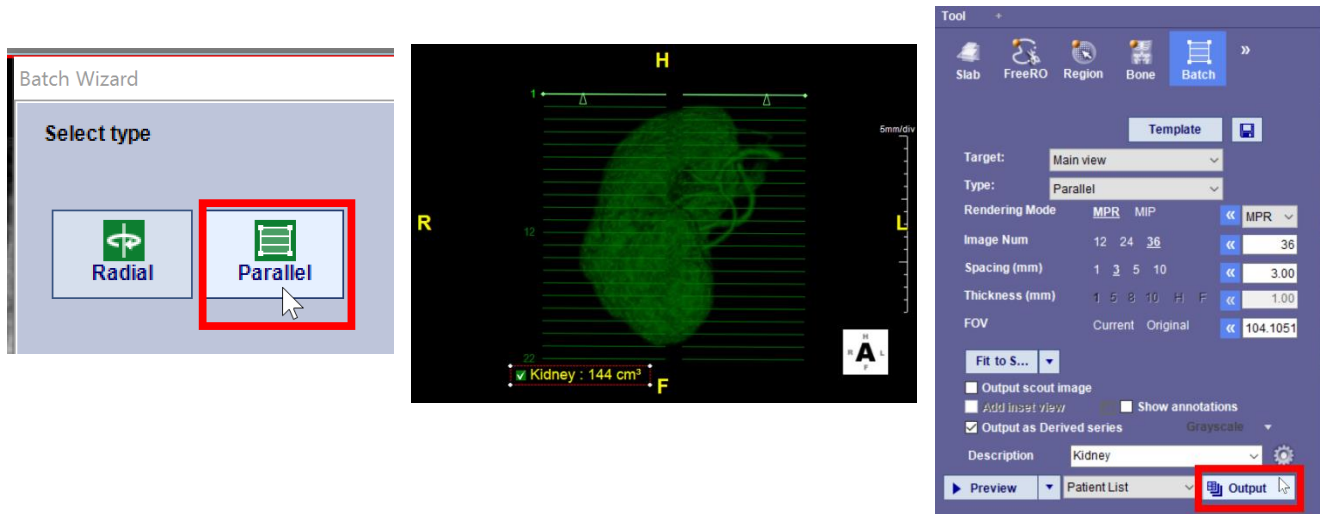
9. To display the color masks on the MPR images, click on the “Color Overlay” option from the top toolbar



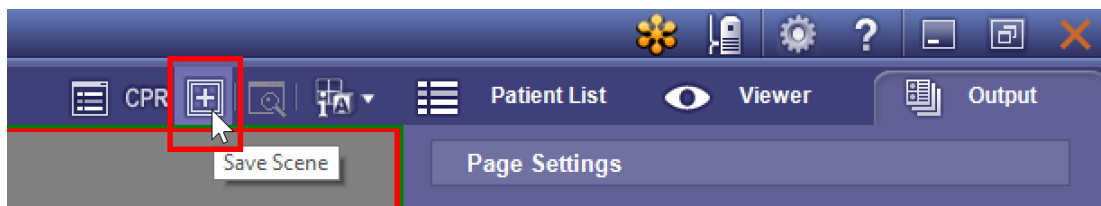
10. To save an axial set of images with the color overlay: Right Mouse click in the 3D box and select Batch wizard or use the Batch Tool in the tool panel.



- a. Select Parallel then left click and drag to drop gridlines. Set parameters as desired and click Output to save.



11. Capture any additional images as desired. Save or Send to PACS from the Output Tab.



12. Save a Scene before closing to save all of your work by left clicking on the **Save Scene** icon in the top toolbar.

