



Using iNtuition – CPR Tool – Airway Flythrough Virtual Bronchoscopy

Quick Guide for Customers

| Notices

Precautions and Warnings Related to Software Use

This quick step guide is not a replacement for the full manual. Please review the Aquarius iNtuition™ Client User Manual for all warning messages, notices and precautions prior to using the software.

About the Guides

Aquarius iNtuition™ Quick Step Guides are intended to be used as a step-by-step guide through typical workflows and should be used in conjunction with clinical application training. The guides are not a substitute for clinical applications training.

Regulatory Notice

Some images may display tools that are not cleared for clinical or diagnostic use the FDA-510k and may only be used for research purposes only. If you are interested in these application tools, please contact your account representative for more information.

Note: Customers who have an integration with a PACS system, please verify upgrade timelines with your PACS vendor.

| For additional support, or to Contact TeraRecon, Inc.

United States

1 (877) 996-0100

email: support@terarecon.com

24-hour Emergency toll-free number is (617) 424-9405

Europe

+49-(0)69-9510352-255 for all European customers

0800-837273266 for customers in Germany, Switzerland/Austria, and France

email: support@terarecon.com

24-hour Emergency toll-free number is 1 (617) 424-9405

International Support

1 (650) 653-4290 (U.S.)

email: support@terarecon.com

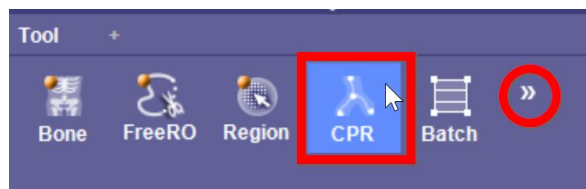
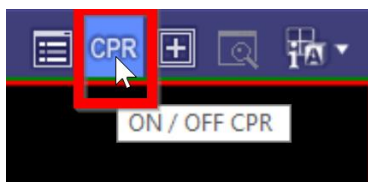
24-hour Emergency number is 1 (617) 424-9405



4000 East 3rd Ave, Suite 200 Foster City, CA 94404

Quick Steps: CPR Tool:

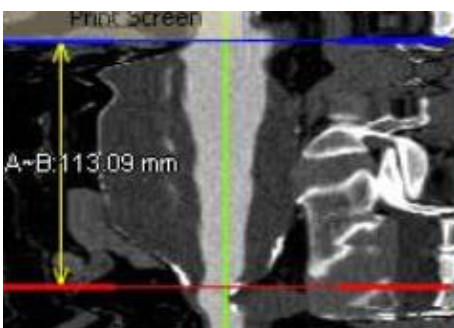
1. Load series into viewer- choose any workflow template.
2. Open the CPR tool in the top tool bar or in the tool panel on the right side of the monitor.
 - a. If you do not see it in the tool panel, left click on the double arrows to open a window with the additional tool options.



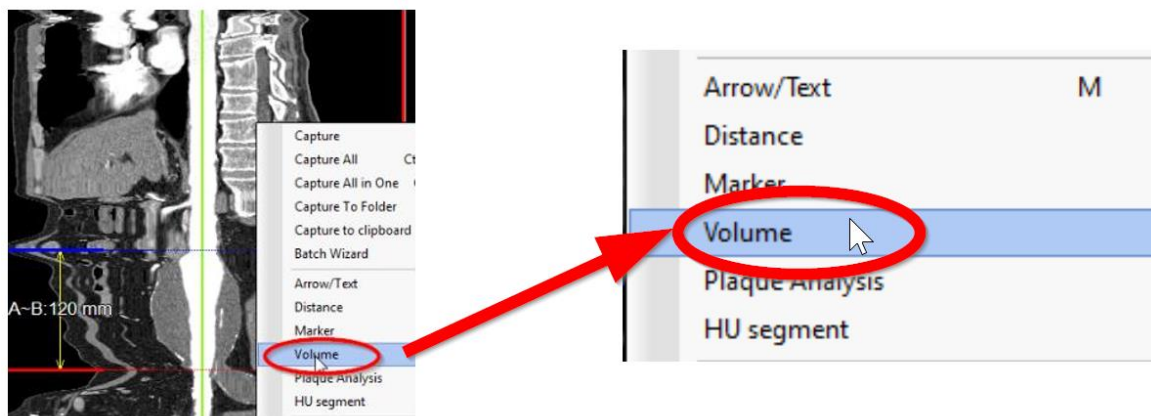
3. Select or generate the centerline on the vessel containing the aneurysm.
4. Change CPR image to a SMPR. This will be in a ghost menu at the bottom of the CPR views.



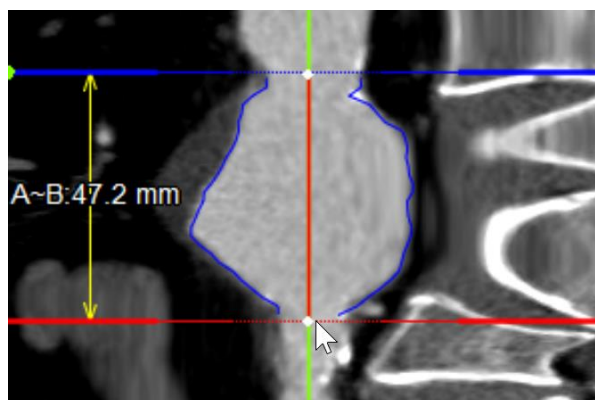
5. Set the blue bar at the top of the aneurysm and the red bar at the bottom of the aneurysm.



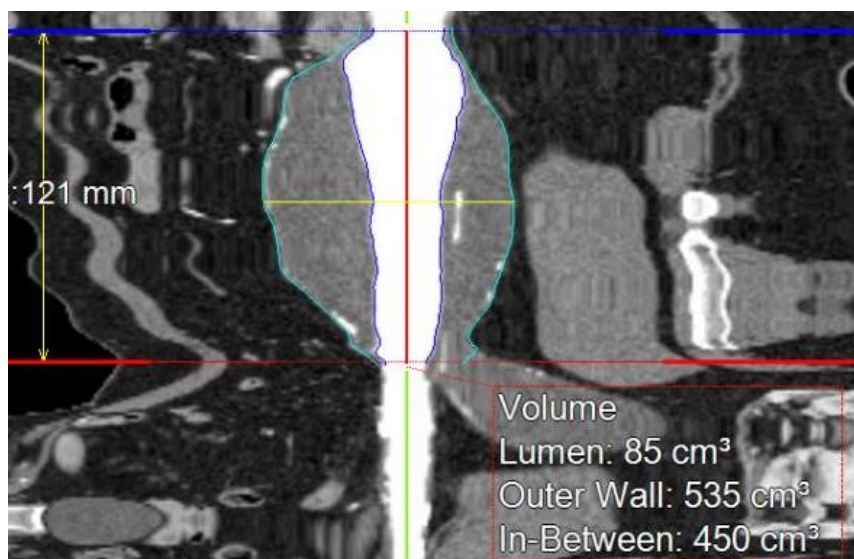
6. Right mouse click within the SMPR window (but not directly on the Centerline) and select Volume from the right mouse menu.



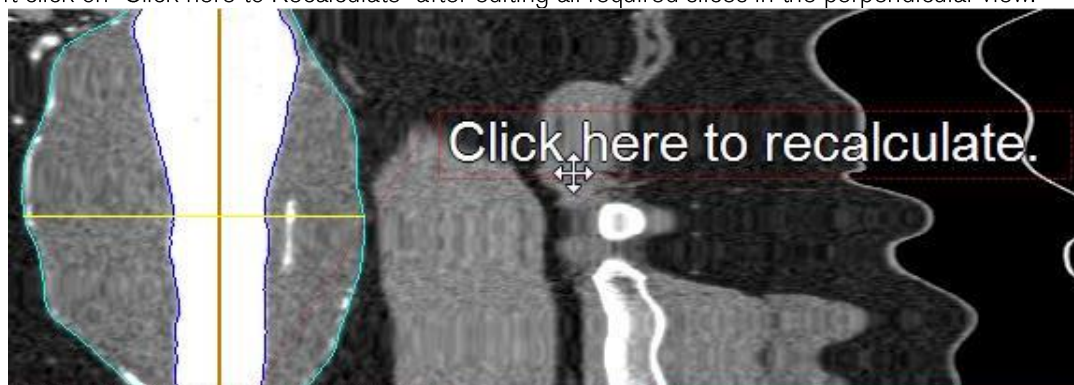
7. Left mouse click and drag the crosshair from the blue to the red line (or vice versa).



8. The system will automatically calculate the volume of the aneurysm.

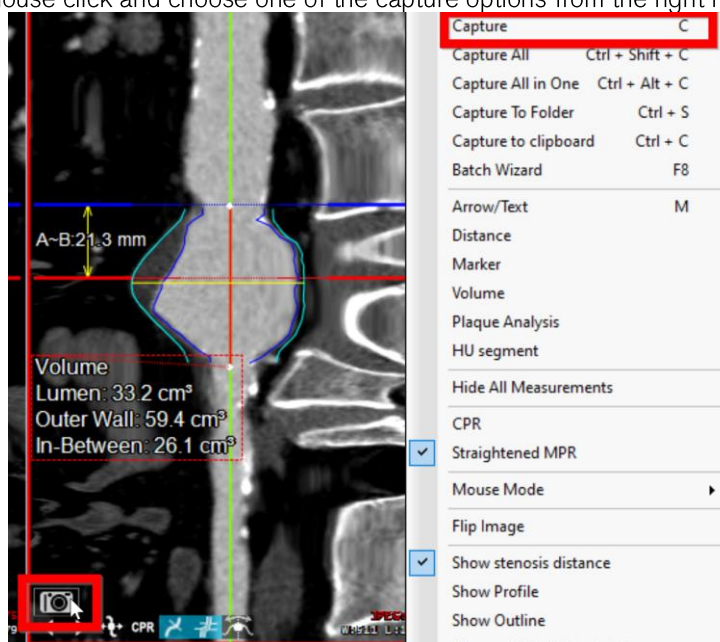


9. To edit the outline of the thrombus: Hold Shift + Left Mouse Hold & Redraw the correct contour on the perpendicular view.
10. Left click on "Click here to Recalculate" after editing all required slices in the perpendicular view.



11. The new volume will be calculated.

12. Capture any desired images by doing any of the following:
- Click the camera in the bottom left corner of the
 - Hit "C" on the keyboard with your mouse in the desired box
 - Right mouse click and choose one of the capture options from the right mouse menu



13. Open the Output panel, select the send location, create the series description and hit "OK" to send those captures to PACS.

