



Using iNtuition – Batch Tool -

Creating a Perpendicular Batch on a CPR

Quick Guide for Customers

| Notices

Precautions and Warnings Related to Software Use

This quick step guide is not a replacement for the full manual. Please review the Aquarius iNtuition™ Client User Manual for all warning messages, notices and precautions prior to using the software.

About the Guides

Aquarius iNtuition™ Quick Step Guides are intended to be used as a step-by-step guide through typical workflows and should be used in conjunction with clinical application training. The guides are not a substitute for clinical applications training.

Regulatory Notice

Some images may display tools that are not cleared for clinical or diagnostic use the FDA-510k and may only be used for research purposes only. If you are interested in these application tools, please contact your account representative for more information.

Note: Customers who have an integration with a PACS system, please verify upgrade timelines with your PACS vendor.

| For additional support, or to Contact TeraRecon, Inc.

United States

1 (877) 996-0100

email: support@terarecon.com

24-hour Emergency toll-free number is (617) 424-9405

Europe

+49-(0)69-9510352-255 for all European customers

0800-837273266 for customers in Germany, Switzerland/Austria, and France

email: support@terarecon.com

24-hour Emergency toll-free number is 1 (617) 424-9405

International Support

1 (650) 653-4290 (U.S.)

email: support@terarecon.com

24-hour Emergency number is 1 (617) 424-9405



4000 East 3rd Ave, Suite 200 Foster City, CA 94404

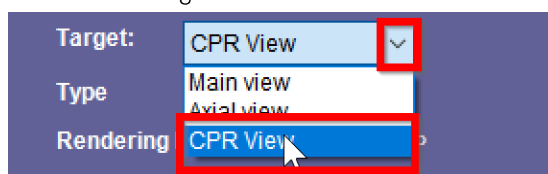
Quick Steps: Batch Tool

To use the Batch Tool:

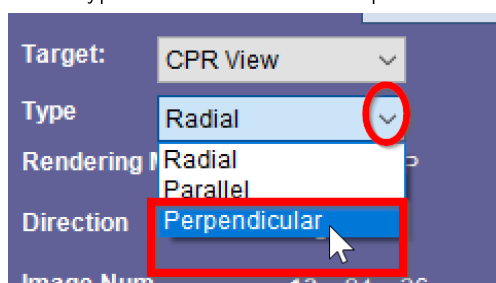
1. Load a Study into the Viewer, Select or Create the appropriate centerline and select the Batch tool.



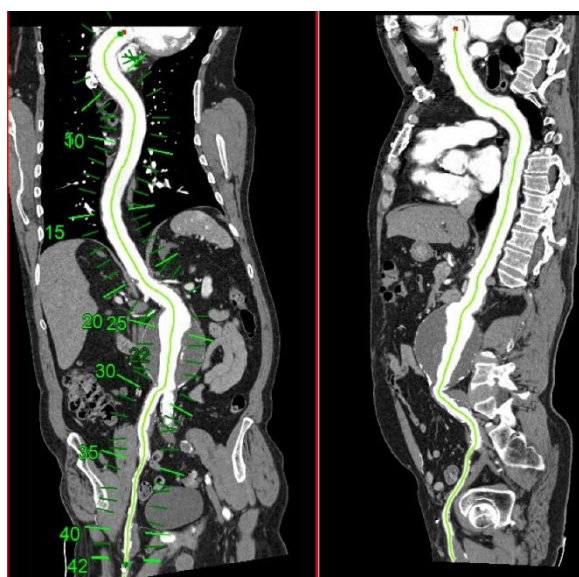
2. Select the drop-down arrow next to the "Target" box and choose "CPR View."

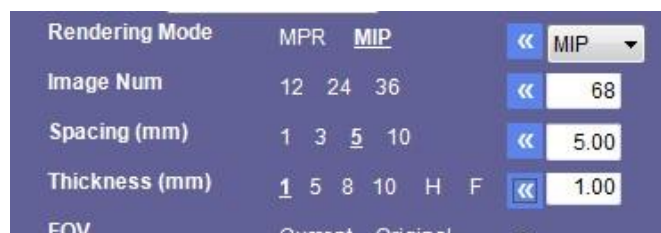
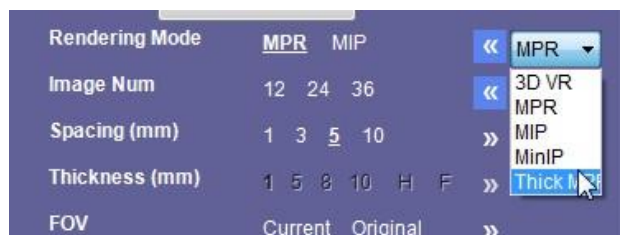


3. Select the drop-down arrow next to "Type" box and choose "Perpendicular."

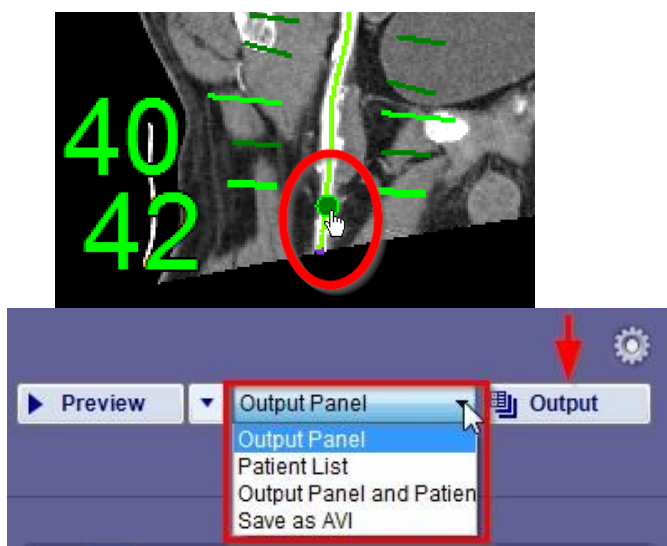


4. In the left CPR Viewport, Hold Left Mouse and Drag along the length of the centerline to create the perpendicular batch gridlines.
5. Chose rendering mode, spacing, and slice thickness. If you want to create an MPR with different spacing than what is available, choose ThickMPR and you will be able to adjust both Spacing and Thickness.

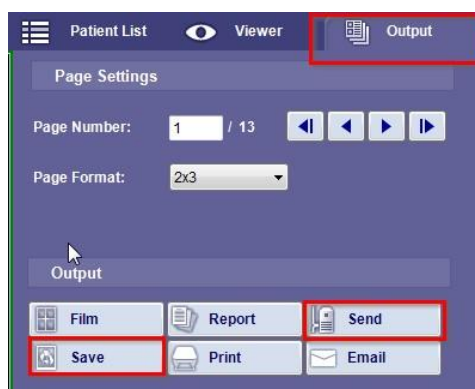




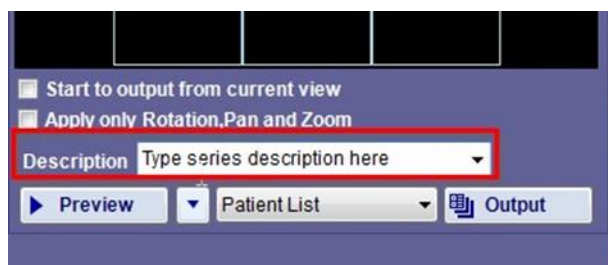
6. To adjust the length of the grid, left mouse click and drag the radial button located on the middle edge of the grid and increase or decrease the length of the batch. Cursor will turn to a pointer finger when directly over the radial button.
7. Chose a location or save as an AVI. To save the batch images, left click on the Output button in the right lower corner.



8. If images were sent to the Output panel, select the Output tab, choose "Send" icon and select a DICOM destination. Images may also be saved to the computer by selecting the "Save" icon.



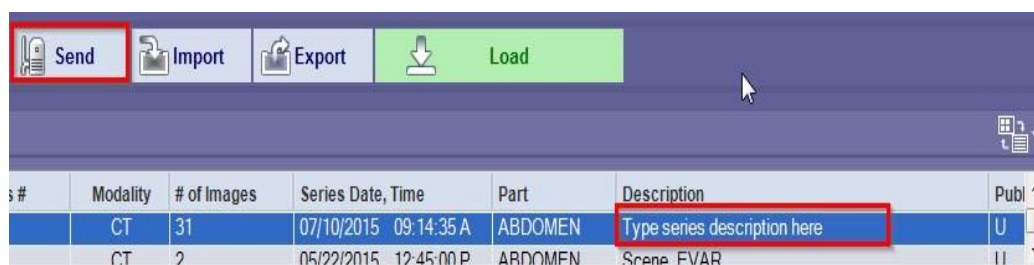
9. If Patient list is chosen, type in the series description. This description will show in your PACS as the series name.



10. Go to the patient list, update the list by select the refresh icon located in the upper left just above the study list.



11. The new series is now located in the series list associated with your exam. Select Send and the DICOM destination.



12. If choosing to save as an AVI, a popup will appear prompting to choose the file save location.

